

# Industrial goods

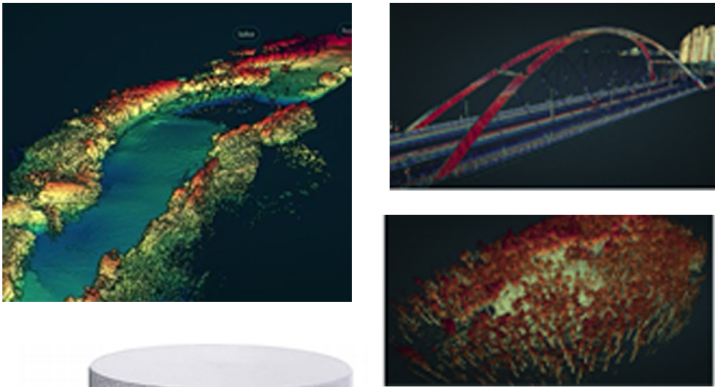
## I DL-Replica



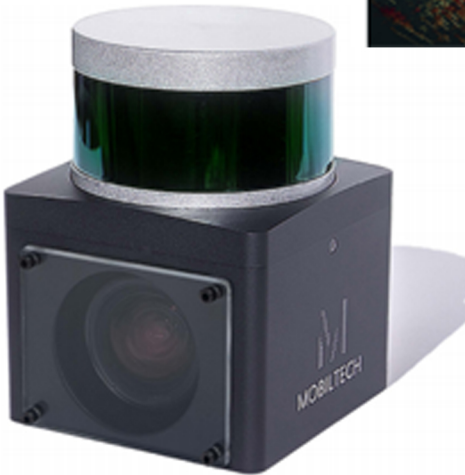
### 3D High-Precision mapping system

DL-Replica is a 3D high-precision mapping system that can be used for drones and vehicles. MOBILTECH will make jigs, calibrate, and fuse sensors for you, so you can optimize and use your data for a variety of environments and applications. Optimized for multi-purpose data collection and mapping. Provides multi-mounts for portable, automotive, drone, etc.. Using a high-reliability sensor, applying the LiDAR dual return function. High-precision synchronization between sensor data. Customizable, compatible sensor customizable. Built-in mobile technology LiDAR Mapping SW

- Real Time Scanning Supports both SLAM and MMS → chekc simultaneously and more precise point cloud
- Day and Night Using laser to scan and speical camera such as thermal imaging camera or infrared camera
- Customization MOBILTECH will customize it to suit your needs.



- Available Sensors
- LiDAR
    - Velodyne, LiDAR, HESAL LiDAR
  - Camera
    - Pointgery, Baumer, Special cameras (thermal imaging, infrared, etc)
  - ING/GNSS
    - Applanix IMU (main sensor), Xsens IMU, LORD IMUS



Using Sensor Information			
	LiDAR	Camera	IR
Maximum Altitude	80m / 160m	-	-
Precision	5cm	-	-
Maximum Velocity	80km/h	-	-
Resolution	-	1920X1020	640X512

## I Company Introduction

### Company Name : MOBILTECH

Mobile Tech is a startup that deals with 3D spatial information based on AI. We develop self-driving systems, including data collection, processing, and provide them to smart cities, autonomous vehicles, and security. High-precision digital twin data and HD map data are being provided to Korean and Silicon Valley self-driving technology companies and have attracted investment from Naver, Hyundai Motor, Woori Bank and others in recognition of their technological prowess.

Manager : Changhoon Kim  
E-mail : changhoon.kim@mobiltech.io  
Tel : +82-31-689-2023  
Homepage : <http://mobiltech.io/>  
Productpage : <https://bityl.co/812F>